



Winton Agri-Machinery

OPERATOR'S MANUAL

**WINTON HEAVY DUTY FLAIL MOWER
PART NO(S): WFL105, WFL125, WFL145,
WFL175 & WFL195**



IMPORTANT

**Read these instructions before installing and
using this implement**

CONTENTS

SAFETY OPERATIONS

MOWER OPERATIONS

SERVICE & MAINTENANCE

PARTS LIST

Safety at all times

Thoroughly read and understand the instructions given in this manual before operation. Refer to the "Safety Decal", read all instructions noted on them.

Do not allow anyone to operate this equipment who has not fully read and comprehended this manual and who has not been properly trained in the safe operation of the equipment.

Operator should be familiar with all functions of the unit.

Operate implement from the driver's seat only.

Make sure all guards and shields are in place and secured before operating the implement.

Do not leave tractor or implement unattended with engine running.

Dismounting from a moving tractor could cause serious injury or death.

Do not stand between tractor and implement during hitching.

Keep hands, feet, and clothing away from power-driven parts.

Wear snug fitting clothing to avoid entanglement with moving parts.

Watch out for wires, trees, etc., when raising implement. Make sure all persons are clear of working area.

Turning tractor too tight may cause implement to ride up on wheels. This could result in injury or equipment damage.

Look For the Safety Alert Symbol

The SAFETY ALERT SYMBOL indicates there is a potential hazard to personal safety involved and extra safety precaution must be taken. When you see this symbol, be alert and carefully read the message that follows it. In addition to design and configuration of equipment, hazard control and accident prevention are dependent upon the awareness, concern, prudence and proper training of personnel involved in the operation, transport, maintenance and storage of equipment.

Be aware of signal words

A signal word designates a degree or level of hazard seriousness. The signal words are:

DANGER

Indicates an imminently hazardous situation which, if not avoided, will result in death or serious injury. This signal word is limited to the most extreme situations, typically for machine components that, for functional purpose, cannot be guarded.

WARNING

Indicates a potentially hazardous situation which, if not avoided, could result in death or serious injury, and includes hazards that are exposed when guards are removed. It may also be used to alert against unsafe practices.

CAUTION

Indicates a potentially hazardous situation which, if not avoided, may result in minor or moderate injury. It may also be used to alert against unsafe practices.

For your protection

Thoroughly read and understand the “safety label” section, read all instructions noted on them.

Shutdown and storage

Lower machine to ground, put tractor in park, turn off engine, and remove the ignition key.

Detach and store implements in an area where children normally do not play. Secure implement by using blocks and supports.

Use safety lights and devices

Maximum transport speed for implement is 20 mph. Do not exceed. Never travel at a speed which does not allow adequate control of steering and stopping. Some rough terrain requires a slower speed.

Sudden braking can cause a towed load to swerve and upset. Reduce speed if towed load is not equipped with brakes.

Use the following maximum speed - tow load weight ratios as a guideline:

20 mph when weight is less than or equal to the weight of tractor.

10 mph when weight is double the weight of tractor.

IMPORTANT: Do not tow a load that is more than double the weight of tractor.

Keep riders off machinery

Riders obstruct of operator's view, they could be struck by foreign objects or thrown from the machine

Never allow children to operate equipment.

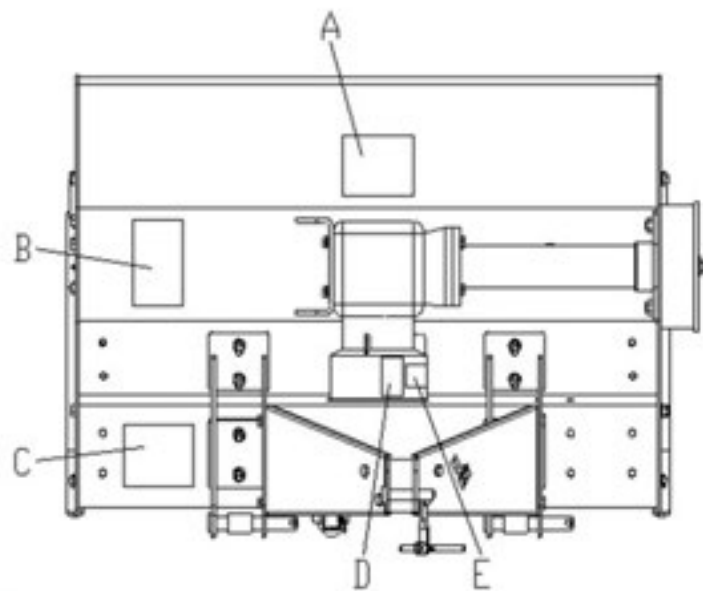
Practice safe maintenance

Understand procedure before doing work. Use proper tools and equipment. refer to Operator's Manual for additional information.

Work in a clean dry area.

Lower the implement to the ground, put tractor in park, turn off engine, and remove key before performing maintenance.

Allow implement to cool completely.



B



A



C



D



E



Operating Instructions

Transporting

NOTE: Always disengage PTO before raising mower to transport position.

When raising the mower to transport position, be sure that driveline does not contact tractor or mower. Adjust and set the tractor's 3-point hitch lift height so that the driveline does not contact mower deck in the fully raised position.

Be sure to reduce tractor ground speed when turning, leaving enough clearance so that the mower does not contact obstacles such as buildings, trees or fences.

Select a safe ground travel speed when transporting from one area to another. When travelling on roadways, transport in such a way that faster moving vehicles may pass safely.

When travelling over rough or hilly terrain, shift tractor to a lower gear.

CAUTION: When travelling on public roads, whether at night or during the day, use accessory lights and devices for adequate warning to operators of other vehicles. Comply with all Federal, State, and local laws.

Mowing Instructions

Clear area to be mowed of objects and debris that might be picked up and thrown by the mower blades.

Grass is best cut when it is dry. Mowing wet grass can cause plugging resulting in grass clumps behind the mower.

Grass should be mowed frequently as shorter clippings deteriorate faster.

If mowing extremely tall grass, it is best to raise cutting height and mow the area, then lower cutting height and mow a second time at the desired height.

Operating Instructions

Proper servicing is important for increasing longevity of any machine, with careful and systematic inspection of the mower, costly maintenance, time and repair can be avoided.

Before beginning to mow, the following inspection should be performed:

Check oil level in gearbox.

Check that all plugs in gearbox have been replaced and tightened properly.

Be sure all mower knives, bolts and nuts are tight.

Be certain all guards and shields are in place and secure.

Grease driveline shaft and all other grease fittings.

Clear area to be mowed of rocks, branches and other foreign objects.

Lower mower to ground. Set tractor throttle at approximately 1/4 open. Engage PTO to start blades rotating.

Operate with 540 rpm PTO tractor.

At first begin mowing at a slow forward speed and shift up until the desired speed is achieved - maintaining 540 PTO rpm.

Mower knives will cut better at a faster blade speed than at reduced throttle.

After mowing the first 50 feet, stop and check to see that the mower is adjusted properly.

Do not make sharp turns or attempt to back up while mower is on the ground.

Do not engage PTO with mower in the fully raised position. Do not engage PTO at full throttle.

Assembly and Set-up

Tractor Requirements: This mower is designed with a 3-Point category I hitch. Tractor horse power rating should not exceed 80 PTO horse power.

Assembly: Refer to the parts illustration.

Tractor Hook-Up:

Be certain that tractor draw bar will not interfere. Move draw bar ahead or remove if required. Draw bar should also be checked for clearance when unit is being raised for the first time.

Align lower link arms of tractor to hitch clevises on mower. Insert lower hitch pins into lower ball swivels and attach linch pins.

Attach tractor top link to upper floating hitch on mower with pin supplied. Secure with lock pin.

Adjust tractor top link in or out to place upper hitch pin vertically above or slightly behind lower hitch pins to allow mower flotation. The mower should be run with the back 15 degrees lower than the front.

Driveline Installation:

Slide driveline end with extended safety cone over spine shaft of the gearbox and secure with attaching device.

Slide driveline over tractor's spine PTO shaft and secure with locking device of driveline.

Driveline should now be moved back and forth to insure that it is secure on the PTO shaft of the tractor and mower gearbox.

Attach chain from the driveline shield to one of the upper hitch braces to ensure that the shield does not rotate.

Should driveline require shortening:

Hold the half-shafts next to each other in the shortest working position and mark them.

Shorten inner and outer guard tubes equally.

Shorten inner and outer sliding profiles by the same length as the guard tubes.

Proper overlap is a minimum of one-half the length of each tube, with both tubes being of equal length.

Round off all sharp edges and remove burrs. Grease sliding profiles.

CAUTION: Tractor PTO shields and all mower guards must be in place at all times during operation

Maintenance and Lubrication

Maintenance

Proper servicing and adjustment is the key to the long life of any farm implement. With careful and systematic inspection, you can avoid costly maintenance, time and repair.

CAUTION: For safety reasons, each maintenance operation must be performed with tractor PTO disengaged, mower lowered completely to ground and tractor engine shut off with ignition key removed.

After using the mower for several hours, check all bolts to be sure they are tight and check drive belt tension.

Replace any worn, damaged or illegible safety decals by obtaining new decals from dealer.

Knife Replacement

IMPORTANT: Make sure that the knife is the same length as the others on the mower. This will keep the rotor rotation balanced.

Remove bolt and nut. Remove old knife. Install new knife and existing bolt. Secure with nut.

V-Belt Installation

CAUTION: Belt drive system under spring tension; use care to avoid bodily harm.

Remove belt guard fender and belt cover.

Disengage belt tension by loosening belt tension bolt until belt can be removed.

With tension relieved from belt remove old belt from pulleys.

Tighten belt tension bolt.

Reinstall belt guard and belt guard fender.

Storage

At the end of the working season or when the mower will not be used for a long period, it is good practice to clean off any dirt or grease that may have accumulated on the mower and any of moving parts.

Clean as necessary.

Check knives for wear and replace if necessary.

Inspect mower for loose, damaged or worn parts and adjust or replace as needed.

Store unit inside if possible for longer life.

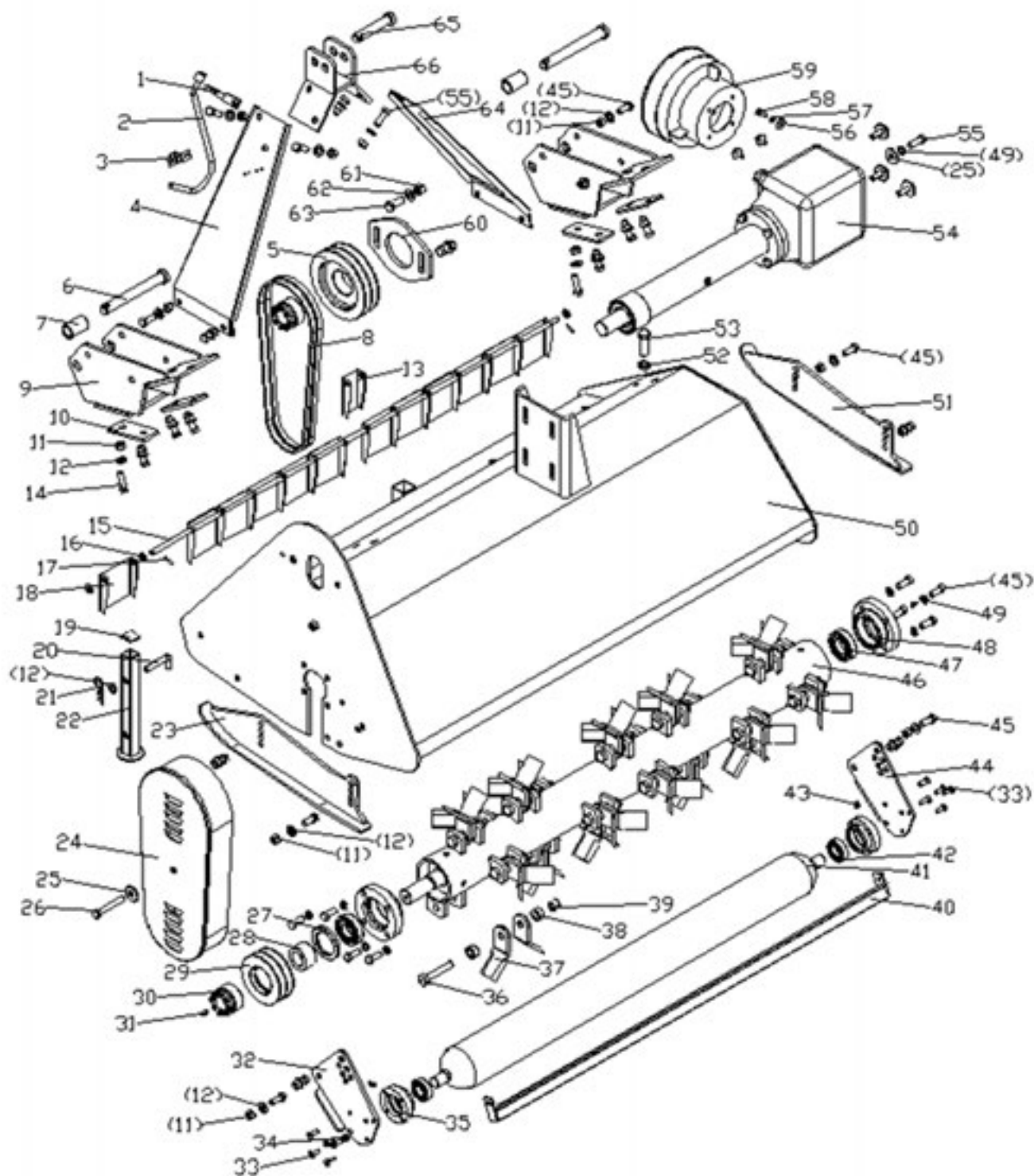
Repaint parts where paint is worn or scratched to prevent rust.

Replace all damaged or missing decals.

<u>Problem</u>	<u>Solution</u>
CAUTION: Do not try to clean rear discharge area when mower is running. Bodily harm may occur!	
Belt slipping	Unplug and clean mower deck.
	Remove belt guard shields and clean sheaves.
	Replace belt.
Patches of uncut grass	Mow at full throttle (540 PTO rpm), check PTO speed and tractor engine.
	Shift transmission to a lower gear.
	Tighten belts.
	Replace missing knives.
Excessive vibration	Replace knives.
	Replace drive belt.
	Replace pulleys or align.
	Remove belt guard shields & clean debris from belt area & sheaves.
Gearbox noisy	Check lubricant level.
Knives scalping grass	Raise cutting height by adjusting roller.
	Change mowing pattern.
	Reduce speed turns.
Uneven cut	Shift to a lower gear.
	Level mower.
	Replace missing knives.
Tractor loaded down by mower	Mow at full throttle (540 PTO rpm).
	Shift to a lower gear.
	Clean mower.

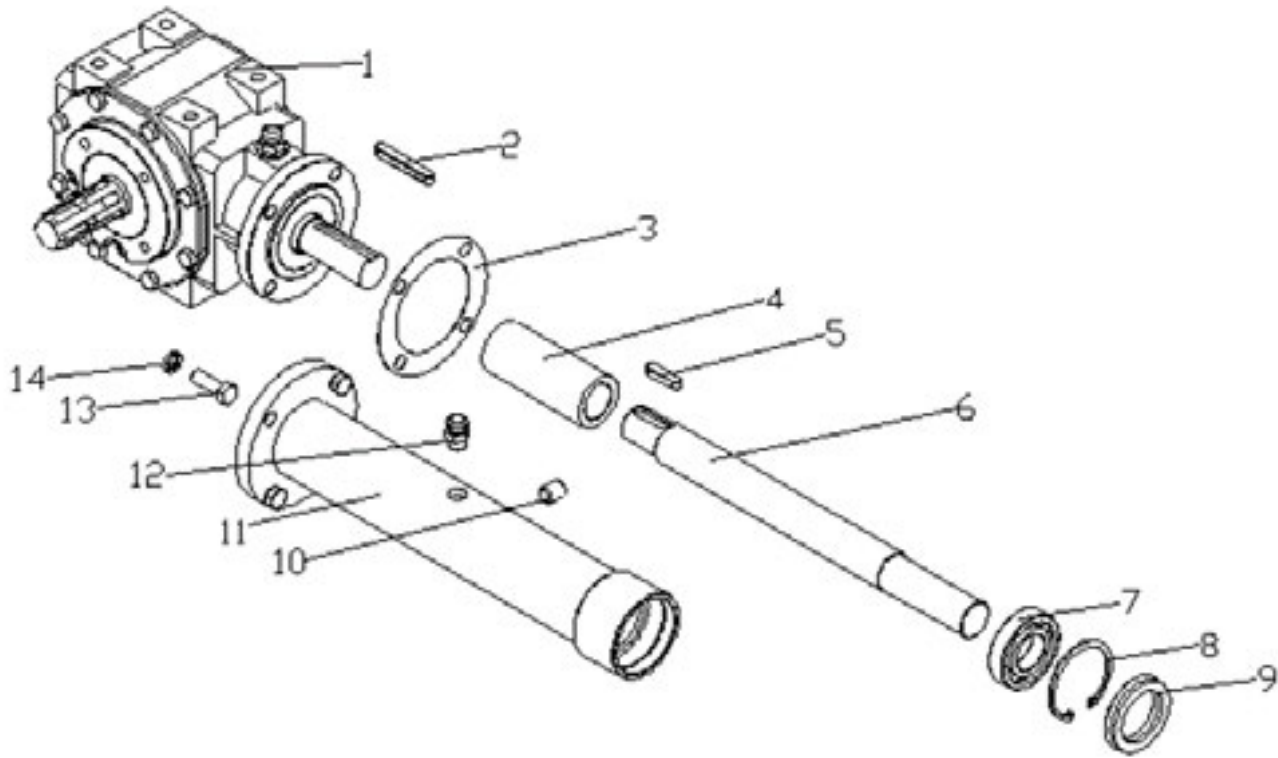
WFL Main Body Parts List

Please note: WFL mowers are attached with hammer blades not Y blades as shown on diagram below.

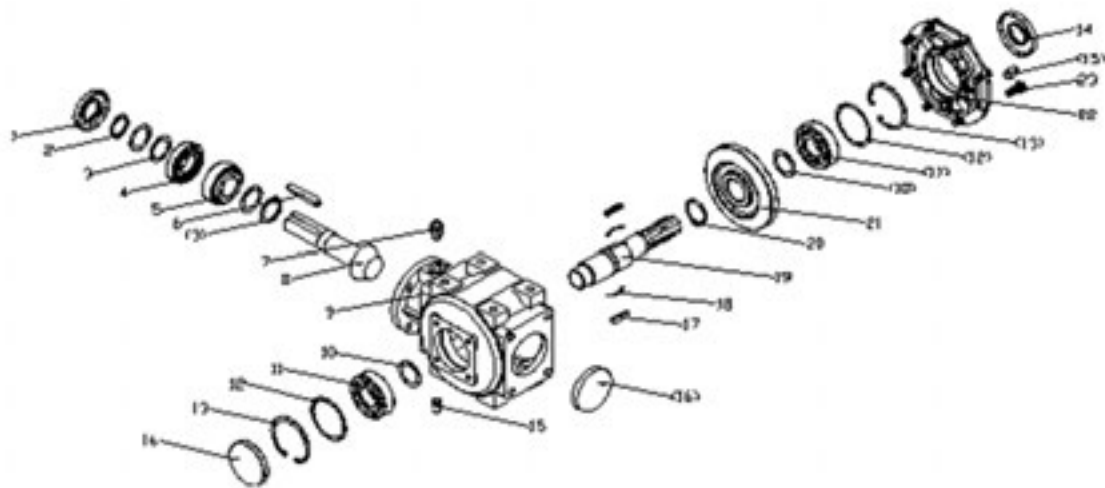


Ref.	Part Number	Description	Quantity
1	EFGC125.101	Fixing Plate	1
2	EFGC125.124	Hook	1
3	EFGC125.102	Clamp for Hook	2
4	EFGC125.021	Suspension Plate (R)	1
5	EFGC125.121	Big Belt Pulley	1
6	EFGC125.109	Pin Shaft Weldment	2
7	EFGC125.108	Spacer	2
8	GB/T1154-97-A965	Strap (Belt) SPB991	2 (WFL125)
			3 (WFL145)
			3 (WFL175)
9	EFGC125.013	Hanging Weldment	2
10	EFGC125.103	Splint	4
11	GB6184-86/M12	Locking nut M12	24
12	GB97.1-85/12	Plain Washer 12	40
13	EFGC125.114	Fender	1
14	GB5783-86/M12X40	Bolt M12x40	8
15	EFGC125.104	Shaft for Fender	1
16	GB97.1-85/10	Plain Washer 10	17 (WFL125)
			19 (WFL145)
			22 (WFL175)
17	GB879-86/4X22	Elastic Cylindrical Pin 4x22	2
18	EFGC125.113	Fender	12 (WFL125)
			14 (WFL145)
			17 (WFL175)
19	EFGC125.112	Cover	1
20	1G135.00.107	Bent Pin	1
21	EFGC125.110	R Pin	1
22	EFGC125.111	Supporting Frame	1
23	EFGC125.014	Base Plate (L)	1
24	EFGC125.012	Belt Cover	1
25	GB96-85/12	Plain Washer 12	5
26	GB5782-86/M12X80	Bolt M12x80	1
27	GB13871-94/55X80X8	Oil Seal FB55X80X8	1
28	EFGC125.116	Oil-sealing Sleeve	1
29	EFGC125.117	Small Belt Pulley	1
30	JB/T7934Z3/35X60	Swellable Sleeve	2
31	GB1152-89/M8X1	Oil Cup M8X1	2
32	EFGC125.105	Supporting for Roller (R)	1
33	GB2673-86/M8X25	Hex.Head Bolt M8X25	10
34	GB6184-86/M8	Locking Nut M8	2
35	EFGC125.107	Bearing	2
36	GB5782-86/M16X1.5X85	Bolt M16x1.5x85	20 (WFL125)
			24 (WFL145)
			28 (WFL175)
37	EFGC125.122	Hammer Blade	20 (WFL125)
			24 (WFL145)
			28 (WFL175)
39	GB6184-86/M16X1.5	Locking Nut M16X1.5	20 (WFL125)
			24 (WFL145)
			28 (WFL175)
40	EFGC125.016	Mud Shield	1
41	EFGC125.017	Roller Weldment	1
42	UC205	FlangeUC205	2
43	GB1152-89/M6	Oil Cup M6	2
44	EFGC125.106	Supporting for roller (L)	1
45	GB5783-86/M12X30	Bolt M12X30	23
46	EFGC125.018	Blade Axle Weldment	1
47	UC207-Z	Flange UC207-Z	2
48	EFGC125.115	Bearing	2
49	GB93-87/12	Spring Washer 12	12
50	EFGC125.011	The Cover Weldment	1
51	EFGC125.015	Base Plate (R)	1
52	GB6173-86/M16X1.5	Nut M16x1.5	1
53	GB5786-86/M16X.5X50	Bolt M16X1.5X50	1
54	EFGC125.019	Gearbox Assembly	1

55	GB5783-86/M12X35	Bolt M12x35	5
56	GB96-85/8	Plain Washer 8	4
57	GB93-87/8	Spring Washer 8	4
58	GB5783-86/M8X20	Bolt M8x20	4
59	FM150.120	Guard Shade	1
60	EFGC125.120	Tension Plate	1
61	GB6184-86/M14	Locking Nut M14	2
62	GB97.1-85/14	Plain Washer 14	2
63	GB5783-86/M14X35	Bolt M14x35	2
64	EFGC125.023	Suspension Plate (L)	1
65	EFGC125.123	Pin Shaft	1
66	EFGC125.022	Bracket Weldment	1



Ref.	Part Number	Description	Quantity
1	TS50.300Z.02	Gearbox Assembly	1
2	GB1096-79/A10X70	Key A10X70	1
3	EFGC125.166	Paper Gasket	1
4	EFGC125.167	Connected Sleeve	1
5	GB1096-79/A10X40	Key A10X40	1
6	EFGC125.168	Shaft	1
7	GB/T276-94/6207	Bearing 6207	1
8	GB893.1-86/72	Circlip 72	1
9	GB13871-94/35X72X10	Oil Seal 35X72X10	1
10	ZBT 32001. 3-87	Retainer	1
11	EFGC125.020	Shaft Tube Weldment	1
12	EFGC125.169	Bolt of Plug Screw (ZG3/8"-19)	1
13	GB5783-86/M12X35	Bolt M12x35	4
14	GB93-87/12	Spring Washer 12	12



Ref.	Part Number	Description	Quantity
1	GB9877.1-88/35X72X10	Oil Seal 35X72X10	1
2	GB894.1-89/35	Circlips for Shaft 35	1
3	TS50.300Z.01.110	Washer (S) 0.7	4
4	GB297-94/30207	Bearing 30207	1
5	GB297-94/32207	Bearing 32207	1
6	GB1096-79/10X65	Key 10X65	1
7	EFGC125.169	Bolt of Plug Screw ZG3/8"-19	1
8	TS50.300Z.01.111	Bevel Gear Shaft	1
9	TS50.300Z.01.101	Gearbox Complete	1
10	TS50.300Z.01.105	Washer (S) 1	2
11	GB/T276-94/6307	Bearing 6307	2
12	TS50.300Z.01.104	Washer (B) 0.7	2
13	GB893.1-86/80	Circlips for hole 80	2
14	GB9877.1-88/35X80X10	Oil Seal 35X80X10	1
15	ZBT32001.3-87	Retainer	1
16	TS50.300Z.01.106	Seal Cover	2
17	TS50.300Z.01.108	Key	2
18	TS50.300Z.01.109	Spring	2
19	TS50.300Z.01.103	Pinon Shaft	1
20	GB894.1-89/42	Circlips for Shaft 42	1
21	TS50.300Z.01.107	Bevel Gear	1
22	TS50.300Z.01.102	Gearbox Cover	1
23	GB5783-86/M10X25	Bolt M18X40	8

NOTES

